

Your role in the Basic Assessment Process

Your involvement will enhance the applicability and completeness of the EIA process.

Your involvement in the Environmental Impact Assessment process is fourfold:

1. To ensure that your interests/concerns in the proposed activity are recorded and/addressed, you need to register with Nsovo as an Interested & Affected Party.
2. To raise public awareness of activities taking place within your surroundings and to ensure inclusion of any issues, suggestions or comments you may be aware of regarding proposed activities.
3. To provide participants with the information they need to participate in a meaningful way.
4. To utilise opportunities provided to raise issues and provide comments throughout the process.

How to become Involved and Register as an I&AP?

Your participation in this process is valuable and is encouraged, therefore you are invited to register as an I&AP and contribute by written submissions by fax, post, email or telephone through any one of the details overleaf.



748 Richards Drive, Elite Park, Halfway
House, 1685

Postnet Suite 697, P/Bag x29, Gallo Manor,
2052

Tell: 011 312 5153

Fax: 086 602 8821

Email: ppp@nsovo.co.za

ENVIRONMENTAL IMPACT ASSESSMENT PROCESS FOR THE PROPOSED DEVELOPMENT OF THE ESKOM AGULHAS 400/132KV 2X500 MVA TRANSMISSION SUBSTATION AND LOOP-IN LOOP-OUT LINES WITHIN THE JURISDICTION OF SWELLENDAM LOCAL MUNICIPALITY, WESTERN CAPE PROVINCE

BACKGROUND INFORMATION DOCUMENT JUNE 2015



From the world we live to the world we seek

Please Quote REF: F008-15 in all correspondence

PURPOSE OF THIS DOCUMENT

The aim of this document is to provide an overview of the proposed project and study area; to provide information of the Environmental Impact Assessment (EIA) process to be followed prior to the development of the proposed substation and associated infrastructure as per the National Environmental Management Act (Act 107 of 1998); and indicate how you, as an Interested and Affected Party (I&AP), can become involved in the EIA process.

PUBLIC PARTICIPATION PROCESS (PPP)

Public Participation Process (PPP) is any process that involves the public in problem solving or decision-making and forms an integral part of the EIA process. The PPP provides Interested and Affected Parties (I&AP) with an opportunity to comment and/or make suggestions on the proposed project. The PPP will be undertaken in terms of Chapter 6 of Regulation 39 through 44 of the EIA Regulations of December 2014.

NEED AND DESIRABILITY

A 400/132kV MTS will be built at Vryheid with 132kV lines to Bredasdorp- and Ashton substation as part of the Vryheid Network Strengthening. The line to Ashton will be a single circuit and the line to Bredasdorp will be double circuit.

The site is located approximately 20 km from Swellendam along the N2 and R319. There are five potential sites that will be investigated and their locations are shown on the attached map.

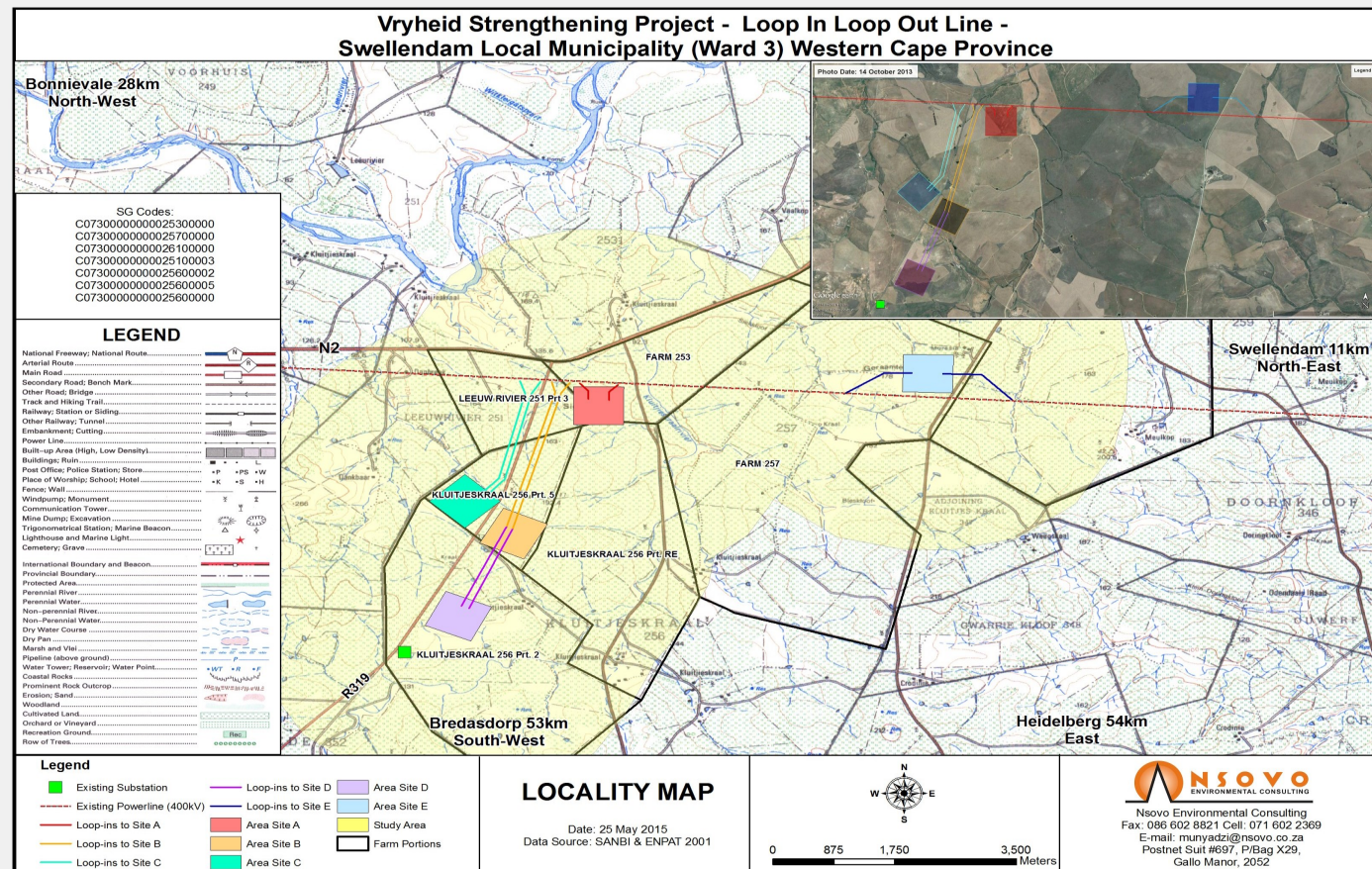
The establishing of the Agulhas and Asteria substations (Houhoek and Vryheid transmission substations) will resolve the unfirm problem at Bacchus substation. The proposed project is therefore vital in the resolving of energy transmission problems within the Western Cape and the country at large.

PROPOSED PROJECT

Eskom Holdings SOC Ltd proposes to develop the Agulhas 400/132kV 2X500 MVA Transmission substation and loop-in loop-out lines as part of Vryheid Network Strengthening. The required area size for the substation location is 600m x 600m to account for current and future needs/plans.

LOCALITY

The proposed project is located on Farms 253, 257, Leeuw Rivier 251 Portion 3 and Kluitjeskraal 256 Portions 2, 5 & RE within the jurisdiction of Swellendam Local Municipality in the Western Cape Province.



LEGAL REQUIREMENTS FOR BA

In accordance with the requirements of the NEMA, Eskom requires approval from the Competent Authority i.e. the Department of Environmental Affairs in order to undertake the proposed project. The proposed project is listed under Government Notice R984 (Listing Notice 2) Activity 9 as an activity that cannot commence without approval.

CONSIDERATION OF ALTERNATIVES FOR THE PROJECT

Another key driver towards a successful EIA process is the thorough identification and investigation of feasible alternatives. The selection of potential alternatives will be informed by input received from the I&APs, Authorities as well as the EAP. Alternatives will be considered and discussed in terms of their practicality and feasibility. It is important to note that the definition of alternatives includes all aspects of the proposed activity including, activity alternatives, process alternatives, scheduling alternatives, demand alternatives; design alternatives and the No-go alternative.

Site Alternatives that have been proposed are indicated on the above map and briefly described below:

Site A is situated next to the current existing Bacchus-Proteus 400 kV line. At this proposed site, the length of the proposed loop line will be short and the length of the distribution lines would be longer. No road crossings will be necessary.

Site B is about 2km from the Bacchus Proteus 400kV line and about 4km from the Vryheid SS. No road crossing will be necessary.

Site C is directly a Site B and distribution will have to cross the road to reach Vryheid SS

Site D is about 5km from the Bacchus-Proteus line. No road crossings necessary. Site E is next to the 400kV.

Site E is the furthest position from the Vryheid SS and its position relative to the Bacchus Proteus line will require that the 132kV from Aghulus SS to Vryheid SS cross the 400kV line.